

WINE  GB
GREAT BRITAIN



VINEGROWING GUIDELINES

2026



Contents

03	<u>Introduction</u>
06	<u>Summary of data entry onto the Data Hub</u>
08	<u>Topic Summaries</u>
12	<u>Parcel summaries</u>
13	<u>Vineyard Maintenance Diary</u>
14	<u>Soil health</u>
17	<u>Vineyard Floor Management</u>
18	<u>Canopy and Yield Management</u>
21	<u>Vineyard Protection</u>
26	<u>Estate Conservation</u>
29	<u>Carbon Footprint</u>
32	<u>Vineyard Waste</u>
34	<u>Further Reading and additional support</u>
38	<u>Audit support</u>

This document is for guidance only: the Auditor reserves the right to use their discretion, on a case-by-case basis, when assessing the evidence that you submit.

Introduction

This manual is designed to support SWGB Members who are preparing for a vinegrowing audit, and should be read in conjunction with the SWGB Data Hub. It is reviewed quarterly and updated every three years, in response to Member feedback and Auditor reports, by the SWGB Scheme Manager, Sustainability Ambassador, Sustainability Council and Board representative.

Scheme audits are performed by an independent party: Ricardo, a world leading engineering, technical and environmental consultancy organisation. Ricardo will normally carry out an audit within the first year of joining the scheme, then every subsequent three years. These audits are rigorous but fair, and, as they are remote, rely to some extent on trust and honesty. However, once over the three year audited period, the Scheme Manager will conduct a spot check of your vineyard, to ensure that all submitted information is true to your site and to support you in preparing for your next audit.

All audits are confidential: they are carried out solely between the Auditor and the Member. Only the Member and the Scheme Manager can identify a Member from their Scheme Number. Any best practice used in WineGB reporting is anonymised.

The audits are timed at the Member's request, and must be booked via the Data Hub. If any support is required during the audit process, contact the Scheme Manager. The Scheme Manager can go through your audit with you to highlight any possible issues before you submit your data for audit.

The Auditor will notify you on any missed information or where the submitted information provided does not satisfy the scheme's standards. You will receive a notification through the data hub and have an opportunity of three weeks to rectify any outstanding issues. The Auditor then has three weeks to respond.

All audits are carried out through the SWGB Data Hub accessed through your 'MyWineGB' area.

This facility is private and secure: Members are only entitled to see their own personal pages. To access the Data Hub, Members must let the Scheme Manager know which email address they wish to use when interacting with it. In the case of wine producers, the same address cannot be used for the separate vinegrowing and winemaking sites on the Data Hub. Once the Scheme Manager is notified of the email address, they will arrange for the Data Hub to send an email to the Member, inviting them to set their own password.

Once an audit has been completed, the report and certificate will be uploaded onto the Archive area of the Member's page, and all the information supplied will be archived by the Auditor. This information will still be available to the Member for future reference.

There are three categories of Scheme Guidelines:

- **Minimum standard** is mandatory at all levels of certification.
- **Best practice** is optional for Green audits, encouraged for Gold audits, and beyond Gold it is expected to see evidence of Best Practice being met.
- **Evaluate and plan.** These guidelines are compulsory for Members completing their second audit and beyond.

Members undergoing their second audit must have 'evaluated and planned' - by conducting SWOT (Strengths, Weaknesses, Opportunities, Threats) analysis AND setting SMART (objectives that are Specific, Measurable, Achievable, Relevant, and Time-bound) objectives relating to their activities in the following fields:

- Soil health and vine nutrition
- Vineyard floor management
- Vineyard canopy & yield management
- Integrated pest management
- Estate conservation and biodiversity
- Waste management
- Carbon footprint reduction



The evaluation process on the Data Hub takes the form of a SWOT analysis, for example (relating to conservation & biodiversity):

Strengths	15% of holding is managed as a wild-life reserve, with native trees in permanent, natural pasture, lightly grazed by rare-breed sheep
Weaknesses	Soil in vineyard alleys has been over-cultivated and over-fertilised in previous years, as evidenced by low earthworm count and excessive vine vigour.
Opportunities	Vineyard alleys could be better managed in order to promote biodiversity.
Threats	Silty soil type is prone to compaction

This evaluation process should generate objectives: statements that define steps that could be taken to:

- Build on strengths
- Overcome weaknesses
- Profit from opportunities
- Mitigate threats

Members should seek to set SMART objectives:

S

pecific

- State what you'll do
- Use action words

M

easurable

- Provide a way to evaluate
- Use metrics or data targets

A

chievable

- Within your scope
- Possible to accomplish, attainable

R

elevant

- Makes sense within your job function
- Improves the business in some way

T

ime-bound

- State when you'll get it done
- Be specific on date or timeframe



Once the objectives have been set, Members must list the actions required to meet the objectives (there may be more than one), and, for each action, identify:

- The person(s) expected to complete this action (the 'Action owner')
- A date of completion (within the three-year plan)
- An allocated budget (if required)
- Any annual targets

The Scheme requires Members to re-visit the SMART objectives every year and update the relevant sections. There is a section for additional comments on each data entry area of the Hub. There is a section for additional comments on each data entry area of the Hub. Please use this for any explanation required for the data inputs above. The Auditor can then put their comments into a section below this. Please read these carefully and respond appropriately. There should be no other communication between the Member and the Auditor

Summary of data entry onto the Data Hub

Data Area	Section	Minimum Standard	Best Practice	Evaluation & Planning	Annually	Every 3 Years
<u>Vineyard Maintenance Diary</u>	Vineyard Maintenance Diary	X			X	
Soil Health	Soil Profile	X			X	
	Soil Evaluation	X			X	
	Soil Analysis	X				X
	Earthworm Count	X			X	
	Regenen		X		X	X
	SWOT analysis			X		X
	SMART Objectives			X	X	
Vineyard Floor Management	Vineyard Floor Strategy	X				X
	Vineyard Floor Plants		X		X	
	SWOT analysis			X		X
	SMART Objectives			X	X	

Data Area	Section	Minimum Standard	Best Practice	Evaluation & Planning	Annually	Every 3 Years
Canopy and Yield Management	Sustainable Pruning		X			X
	Parcel Map	X				X
	Yield Monitoring	X				X
	Ravaz Index	X			X	
	SWOT analysis			X		X
	SMART Objectives			X	X	
Vineyard Protection	Vineyard Monitoring	X			X	
	Pesticide Application	X			X	
	Health Toxicity Index		X		X	
	Non-Chemical Protection	X			X	
	Fruit loss		X		X	
	Pesticide Applicators	X			X	
	SWOT analysis			X		X
	SMART Objectives			X	X	
Estate Conservation	Conservation Map	X				X
	Conservation Features	X				X
	Photographs	X				X
	Animal count		X		X	
	SMART Objectives			X	X	
Carbon Footprint	Footprint Report	X			X	
	Spreadsheet	X			X	
	SWOT analysis			X		X
	SMART Objectives			X	X	
Vineyard Waste	Vineyard Recycling		X		X	
	SWOT analysis			X		X
	SMART Objectives			X	X	

Topic Summaries

It is important Members understand why we are covering the topics we cover in SWGB. How they relate to environmental sustainability and also how they can benefit them as a vineyard.

Vineyard Maintenance Diary

Why

- Understand your practices in the vineyard.
- Holistic view of how your vineyard is maintained and what practices you are doing.
- You are backing up your claims with operational records and ensures there is consistency across all of the answers provided

Benefit

- Understand where you can create efficiencies and make changes.
- Can be used to mitigate risks, compare year on year practices, and see trends (e.g. timing shifts of vineyard activities, frequency of spraying)

Soil Health

Why

- Good soil health is the basis of a healthy and sustainable vineyard.
- Healthy soils contain more organic matter which store more carbon and proves vineyard resilience, especially in terms of irregular rainfall.
- It also ensures stable and resilient biodiversity.

Benefit

- Active soils mean fewer inputs are necessary, saving time and money on spraying.
- Healthy soil contributes to climate resilience and the longevity of your vineyard.
- Good soil health is paramount to protect your yields and keep your vineyard healthy for the long term.

Vineyard Floor Management

Why

- This ties in with soil health. Having good vineyard floor management supports and encourages biodiversity.
- Reducing compaction improves soil health
- The aim to get a more consistent production out of the vineyard.

Benefit

- It improves soil health, particularly water management with heavy rainfall.
- Helps with natural nutrient additions meaning you can have a lower reliance on chemical inputs.
- Contributes to soil organic carbon.

Canopy and Yield Management

Why:

- Sustainable pruning keeps your vines healthy and productive
- Monitoring vine balance is a healthy vine and should result in consistent fruit quality and reliable ripening

Benefit:

- Reduce need for inputs
- Longevity of healthy vines
- Pragmatic, measurable signal of how well your vines are doing

Vineyard Protection

Why:

- Understand the environmental impact of your spraying
- Reduce damage to people, plants, and biodiversity in general
- Keep on eye on problem areas of the vineyard and enable yourselves to act fast to potential frost and pests and diseases.

Benefit:

- Save costs on spraying less
- Pre-empt disease and frost damage to reduce crop loss

Estate Conservation

Why

- Demonstrates responsible stewardship of the land beyond the vineyard blocks, including biodiversity areas, waterways, and natural habitats.
- Ensures long-term ecological health of the estate, supporting soil stability, water retention, and ecosystem resilience.
- Shows that sustainability commitments extend to the entire property, not just production areas.

Benefit

- Enhances the overall health and resilience of the vineyard environment, reducing long-term operational risks.
- Strengthens brand reputation by showing consumers and trade partners a genuine commitment to environmental care.
- Can reduce costs associated with erosion, water management, and land degradation.
- Creates opportunities for eco-tourism, and storytelling.

Carbon Footprint

Why

- Tracks emissions including vineyard operations, energy use and fuel consumption.
- Provides a measurable understanding of environmental impact and identifies high-emission areas.
- Encourages data-driven decision-making around energy efficiency and resource use.

Benefit

- Reduces operational costs by identifying opportunities to cut fuel, electricity, and input usage.
- Strengthens market competitiveness as buyers increasingly prefer low-carbon or carbon-transparent producers.
- Helps future-proof the business against regulatory changes, carbon taxes, or reporting requirements.
- Builds trust with consumers and trade partners through transparent environmental reporting.

Vineyard Waste

Why

- Ensures responsible handling, reduction, and recycling of vineyard waste streams such as prunings, plastics, chemicals, and packaging.
- Minimises environmental contamination and supports circular-economy principles.
- Encourages efficient use of materials and reduces reliance on single-use products.

Benefit

- Lowers disposal costs and can create value through composting or repurposing organic waste.
- Reduces environmental risk and potential liabilities associated with improper waste handling.
- Improves operational efficiency by streamlining waste processes and reducing clutter or storage needs.

Parcel Summaries

It's really important that Members get this area right and use accurate data, as, although some of the data is collected on an 'all sites' basis, there are some areas (such as soil health) where they are obliged to manage their vineyard as separate parcels.

A parcel is defined as an area of vines that receives the same treatment & inputs (vineyard floor management, pesticide applications etc.). The size is up to the grower: it can be as small as a couple of rows, or comprise the whole estate.

It is important to note, that, once this section has been completed, it is not possible to change significantly, or delete, parcel information within the audit period (for the next three years), as this would cause large amounts of data loss.

When filling in parcel summaries, Members will need to provide the following information:

- Parcel name or number. This is entirely up to the Member. Those who wish to retain the privacy of their information may use a random name or number, even for small vineyard clusters.
- The total parcel area (in hectares, to two decimal places). In smaller parcels, it would be best if this was the actual area, from vine to vine, not including headlands and hedgerows.
- Grape varieties. Please use their most common name in the UK.

All the entries in this section are automatically summarised on the page, so that Members can check that they have included their total vineyard area before pressing the 'submit' button.

Vineyard Maintenance Diary

This data collection area is designed to enable SWGB Scheme Members to present evidence for audit for the following guidelines:

- **Minimum standard:** Ground cover is present in vineyard inter-row alleys in the winter
- **Minimum standard:** For each parcel, record the cultural interventions relating to the soil (including cultivations, and fertiliser & herbicide applications) carried out in the vineyard
- **Best practice:** Ground cover is present in the alleys and headlands in mature vineyards throughout the year.

For each vineyard parcel, Members will need to upload a document that gives records when (and if), on a day-to-day basis, the following vineyard operations were carried out, and how many worker hours per hectare were spent on each operation:

- Winter pruning: including cutting, pulling out, tying down, and dealing with prunings
- Frost management
- Trellis repairs
- Vineyard floor management: mowing, cultivating and herbicide applications in the:
 - Headlands
 - Alleys
 - Under-row area
- Pesticide application
- Fertiliser application: both soil and foliar feeds, unless already included in the pesticide applications
- Summer pruning and canopy organisation: excess bud & shoot removal, tucking in shoots, trimming, leaf removal, green harvesting.
- Harvesting: by hand or machine

A simple way of doing this is on a spreadsheet with workdays across the top and operations along the side, such as the SWGB Vineyard Diary form. Corresponding squares can be filled in with the number of hours spent completing the operation. This will easily generate the total number of worker hours per operation per year. The total number of hours for each operation per hectare should then be entered into section 2. This information will be automatically summarised at the bottom of the table, then benchmarked on the KPI page of the Repository, and will help Members identify where they might improve their performance.

Don't forget to use the 'Additional comments' box if your diary or number of hours per operation require further explanation.

Soil Health

This Repository data collection area is designed to assist SWGB Scheme Members in presenting evidence for audit for the following guidelines:

- **Minimum standard:** For each parcel, carry out a soil survey that assesses soil fertility and health (including a soil profile; an evaluation of drainage, erosion risk, soil texture and structure; an earthworm count; and an analysis of macronutrient status, organic matter content & CEC) every year.
- **Best practice:** Engage with the Regenerative Viticulture Foundation's One Block Challenge™
- **Evaluation & planning:** Evaluate, from a soil health perspective, current practices used to manage the vineyard floor, then create a plan to reduce the impact of these interventions on soil health.

1. Upload your soil profile.

The SWGB Soil Profile form may be used to record this information.

For each parcel, every three years, Members will need to upload a description of each soil horizon to a depth at which vine roots can be expected to grow (maximum 1 metre):

- Depth
- Colour
- Texture
- Structure
- Drainage capacity (by eye)

2. Soil evaluation

For each parcel, every three years, write a short evaluation of each of the following soil features

- Drainage: this can be evaluated by walking the parcel after heavy rain, also by **using a soil drainage test.**
- Erosion risk: **the DEFRA Countryside Stewardship runoff and soil erosion risk assessment guidance document may be helpful.**
- Texture: **here's a video that may be helpful.**
- Structure: **here's a video that may be helpful.**

4. Soil analysis

For each parcel, every three years, Members must upload a soil analysis taken from a representative sample, preferably of both horizons A & B (separately), using method as approved by AHDB ([see this link](#)) with the following factors analysed:

- Macronutrients: phosphate, potash, magnesium
- Percentage organic matter content
- Cation exchange capacity (CEC)

Whether you use DUMAS or LOI is up to you - just make sure you are consistently using the same at each analysis. Dumas and dry combustion analysis is the most often required or recommended for verifiable carbon projects

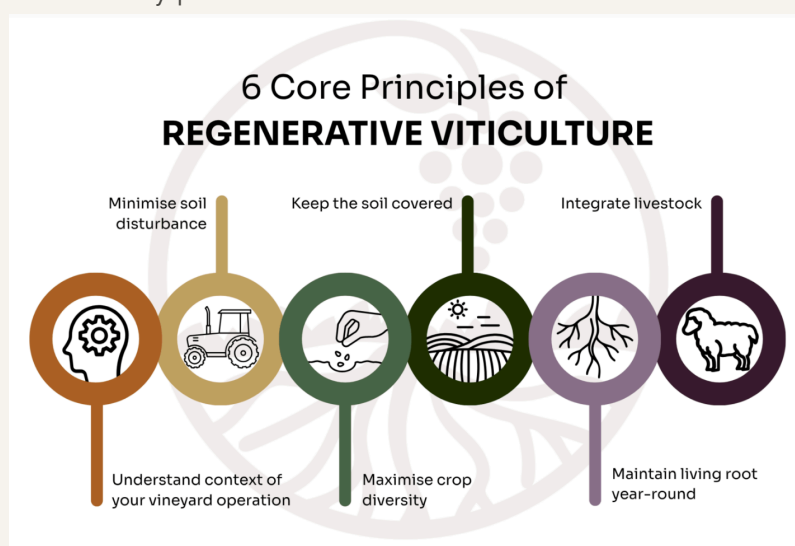
5. Earthworm count

For each parcel, every year, Members must carry out an earthworm count, using a method such as that recommended by AHDB ([see this link](#)), in at least three separate spots in vineyard alleys, and three in under-row areas, carried out during the growing season.

6. Regenerative Viticulture's One Block Challenge™

For one block on your vineyard, engage with the RVF's One Block Challenge™.

The RVF champion these 6 key practices:



“(1BC) gives winegrowers a practical way to explore regenerative methods on a manageable scale and within a supportive community. Each participant dedicates a block of vines, applies a core set of practices, and carries out simple soil and biodiversity tests. By working in cohorts, participants share observations, compare results, and build collective experience that is often difficult to access through certification programs or isolated experimentation”

- The RVF

How to get involved:

- Step 1: Decide on a block of vines to participate with, and one block to use as a control block.
- Step 2: [Express interest with the RVF](#)
- Step 3: Download the RVF 1BC handbook (ADD LINK)
- Step 4: Engage with the RVF's regular workshops and webinars to support you through the process. There is also a whatsapp group chat you can join to connect with the community of vineyards who are already working with the RVF and 1BC.
- Step 5: Record! Upload your data collection forms from the RVF to the SWGB data hub.

Some ideas you may implement with the 1BC:

- Minimise or eliminate synthetic agrochemicals under-vine Include compost and organic soil amendments
- Minimal or no-till interrow (except for cover crop establishment)
- Plant a diverse cover crop
- Encouraged additional practices (optional)
- Reduce synthetic pesticide use on the canopy
- Plant a hedgerow adjacent to the block
- Install songbird, raptor, owl, or bat boxes
- Integrate animals (sheep, cattle)

7&8. Soil health evaluation and management plan

Use your earlier observations for your soil evaluation to help you complete the SWOT analysis for each parcels' soil health.

Here are some suggested objectives for a three-year your soil health improvement plan:

- Measure soil fertility factors (texture, structure, organic matter content, presence of soil organisms, water holding capacity, drainage properties, depth, chemical composition, and acidity) at a fine scale (e.g., 10 m x 10 m) and resolve any significant problems and differences at this scale.
- Prevent soil erosion by eliminating bare soil on slopes and allowing vegetation to grow high, or planting hedgerows in potential run-off areas
- Purchase low-compaction tractor tyres
- Employ a qualified agronomist to review soil health annually
- Increase soil organic matter levels in specific fields
- Reduce the risk of waterlogging/flooding in specific areas by inserting a French drain

Don't forget to use the 'Additional comments' box if your diary or number of hours per operation require further explanation.

Vineyard Floor Management

This data collection area is designed to assist SWGB Scheme Members in presenting evidence for audit for the following guidelines:

- **Minimum Standard:** Ground cover is present in vineyard inter-row alleys in the winter
- **Best Practice:** Monitor the range of plants in vineyard alleys and headlands
- **Evaluation and Planning:** Evaluate, from a soil health perspective, current practices used to manage the vineyard floor, then create a plan to reduce the impact of these interventions on soil health

1. Vineyard floor strategy

Here Members need to enter up to 100 words in each of the text boxes, briefly describing how they manage their vineyard floors in the headlands, alleys, and under-row areas. In particular, the state of the ground cover in the inter-row alleys and headlands throughout the year must be specified.

2. Vineyard floor plant count

The vineyard floor, if properly managed, can be a complex and resilient ecosystem that nurtures vines and promotes biodiversity. The variety of growing plants growing is a good indication of the diversity of invertebrates, fungi and bacteria living on, and beneath, the surface. Nowadays, the vegetation on the vineyard floor can easily be identified, using smartphone applications, such as [PlantNet](#), [LeafSnap](#) and [PlantSnap](#), so this presents a great opportunity for measuring sustainable practices in the vineyard.

Upload a document with a list of all the plants (wild or planted) found in the vineyard alleys and in the headlands. Then, count up how many different species you have present in the vineyard for each year so that these can be benchmarked with other vineyards in the Scheme.

3&4. Evaluation and improvement plan

Here are some suggested objectives for a three-year vineyard floor management improvement plan:

- Replace soil cultivation and herbicide use with a green vineyard floor cover appropriate to your climate, soil conditions and desired vine vigour
- Employ a low-compaction and low-energy method of managing the vineyard floor
- Mulch the surface of poorly performing areas of the vineyard with appropriate C:N ratio composts to increase soil health

Canopy and yield management

This data collection area is designed to assist SWGB Scheme Members in presenting evidence for audit for the following guidelines:

- **Best Practice:** Grapevine pruning is informed by the SWGB principles of sustainable pruning.
- **Minimum Standard:** Map out the parcel highlighting sample vines. Keep annual records of buds left per hectare at pruning, yields and average bunch weight and pruning weight/hectare for each parcel.
- **Evaluation and Planning:** Evaluate vineyard canopy and yield management for each parcel, focussing on the quality of the winter pruning, the resulting canopy, and the yield and quality of grapes produced, then create a plan to optimise canopy and yield management, setting new targets and actions to meet these targets.

1. Sustainable pruning guidelines

The principles of sustainable pruning should be considered every three years for each parcel, as evidenced by a signed copy of the **SWGB sustainable pruning form**. This form has been developed in association with Simonit and Sirch (The Master Pruners), but is reviewed regularly by the SWGB Sustainable Vinegrowing Group.

2. Sample vines

In order to manage the canopy and yield of each parcel, Members need to identify, then monitor year on year, a set of representative sample vines. Because vine performance can vary significantly between varieties, clones, and rootstocks (and even within large or diverse parcels) Members should establish at least one sample set per variety/clone/rootstock combination, with a minimum of 20 vines per set wherever possible. Larger or more heterogeneous parcels may require multiple sample sets to ensure that monitoring reflects the true variability of the site. This approach aligns with best-practice guidance, including recommendations from Sector Mentor.

In this section, Members will need to upload vineyard maps identifying, for each parcel:

- The position of at least 10 (preferably 20) sample vines, which should remain the same from year to year
- A figure for the actual number of vines in the parcel (A), not including dead or missing vines
- An accurate measurement of the vineyard parcel (not including headlands) (B)

3. Yield monitoring

Here Members need to upload a table, comprising of, for each year, and for each sample vine, a figure (max 3 significant figures) for:

- The total number of buds per vine (canes and spurs) left at winter pruning
- The total number of shoots per vine growing at flowering
- The average number of inflorescences (flower bunches) per vine at flowering
- The average number of grape bunches per vine at veraison
- The average bunch weight at harvest, or
 - The average number of berries per bunch at veraison, and
 - The average berry weight at harvest
- The weight of canes cut off at winter pruning

This is followed by a table of averages for the sample vines. For each year (+ historical average), and for each parcel (max 3 significant figures):

- The average number of buds/vine left at winter pruning (C)
- The average number of shoots/vine growing at flowering (D)
- The average number of inflorescences (flower bunches) per vine at flowering (E)
- The average number of berry clusters per vine at veraison (F)
- The average bunch weight at harvest (J), or
 - The average number of berries per bunch at veraison (G), and
 - The average berry weight at harvest (H)
- A figure for the % successful budburst: $(D \times 100 / C)$
- A yield estimate at flowering $(E \times A \times J)$
- A yield/ha estimate at veraison: $(F \times J \times A)$, or $(F \times G \times H \times A)$
- A record of the actual yield at harvest (L)
- The average weight of prunings per vine (K)
- The Ravaz index for the parcel $(L / K \times A)$

The [**SWGB Yield Monitoring Spreadsheet**](#) may be used to record all this information, you may use your own data capture if you record this information in a different way.

4. The Ravaz Index

The Ravaz Index is the weight of grapes produced in a field divided by the weight of prunings removed from the plants when pruning in the following winter. It is an indicator of the balance between reproductive growth (grape weight) and vegetative growth (pruning weight) and has been closely linked to grape quality (especially sugar levels) in numerous studies. In theory, for each vineyard/variety combination, there is an optimum figure where the vineyard yields are commercially sustainable, without affecting the level of ripeness of the grapes, though this does vary from year to year. Although the optimum Ravaz index is dependent on the vineyard, variety, and the weather, it is still interesting to calculate and benchmark it against that of the other members, so, each year, Members are required to enter their index into this section of the Data Hub. No UK-specific Ravaz Index targets are formally published however, across viticulture research and extension work, several patterns emerge:

- Balanced vines often fall in the range of 5–10 for many *Vitis vinifera* varieties.
- Low values (<3–4) usually indicate excessive vegetative growth or under-cropping.
- High values (>10–12) often indicate over-cropping, which can compromise ripening, winter hardiness, and long-term vine health.

5&6. Vineyard Canopy and Yield Evaluation and Management Plan

Here are some suggested objectives for the three-year plan to improve vineyard canopy and yield management:

- Identify areas of variability in vigour and yield within parcels and strategies for reducing variability.
- Learn to prune by the Simonit and Sirch method
- Put in place a Sectormentor recording system to efficiently record vine performance
- Identify and implement practices to manage vine vigour in order to achieve better canopy quality and balance between leaf area and fruit weight (or Ravaz index), such as:
 - To increase vigour: increased nutrition, improve soil health & organic matter levels
 - To decrease vigour: plant more competitive cover crop on vineyard floor
- Implement a strict bud/shoot/leaf removal regime in order to avoid excess shade in the canopy fruit zone
- Control excessive yield through flower/cluster removal before veraison
- Study local growing conditions and employ the services of an experienced consultant when designing a new plantation (site preparation, varietal/rootstock selection, training system)
- Set optimum target yields and ripeness indicators (sugars, acid, pH) for each parcel

Vineyard Protection

This data collection area is designed to assist SWGB Scheme Members in presenting evidence for audit for the following guidelines:

- **Minimum standard:** During the growing season, monitor for pests and diseases at least every fortnight
- **Minimum standard:** Use biological, cultural, mechanical, biosecurity and physical plant protection methods, in conjunction with chemicals.
- **Minimum standard:** Pesticide applicator calibration and service records are kept.
- **Minimum standard:** Records are kept of every spray application for each parcel.
- **Best practice:** Calculate the total Health Toxicity (HTI) and Environment Toxicity (ETI) Indices for each growing season.
- **Evaluation & planning:** Evaluate the effectiveness of all plant protection measures, then create a plan, with targets and actions to increase efficiency and effectiveness and to minimise and optimise the use of pesticides

1. Vineyard Monitoring Diary

Each year, Members need to upload a plan of how vineyard monitoring for pests and diseases will happen, with dates of when it will happen (in the growing season), confirmed by a date of when it did happen (maximum two weeks' interval), and who carried it out (preferably the same person). For instance, the plan could be that the grower goes around the plot, then down every sixth alley, noting as follows, on the [SWGB pest monitoring spreadsheet](#).

Date	Person	Boarder				Alley				Notes
		North	West	South	East	6	12	18	24	
13/4/25	Andy	OK	OK	OK	OK	OK	OK	OK	OK	
20/4/25	Frances	OK	OK	1	OK	OK	OK	2	OK	1 - Frost Damage, 2 - mites?
27.4/25										

2. Pesticide Applications

For each parcel, each pesticide application must be recorded, noting date, target pest, pesticide and quantity, crop stage, harvest date, application method, spray volume, weather observations, and precautions followed. The [SWGB Pesticide Application spreadsheet](#) may be used.

3. VitiScore - impacts of vineyard protection

VitiScore – measuring and steering environmental performance in vineyards

VitiScore is a science-based environmental performance indicator designed to assess and compare the risks associated with plant protection practices in vineyards. It translates complex data on pesticide use into a clear, comparable score, covering impacts on human health, biodiversity and water resources. By enabling consistent benchmarking across sites and over time, VitiScore helps vineyards monitor progress, identify high-risk practices, and assess the environmental consequences of strategic decisions. It is particularly suited to collective initiatives, certification schemes and sustainability programmes seeking harmonised, transparent metrics.



About Agritemis

Agritemis is an independent environmental analytics company specialising in the assessment of risks and impacts linked to agricultural inputs, with a strong focus on pesticides. Building on peer-reviewed science and internationally recognised databases, Agritemis develops robust indicators and operational tools that support agroecological transition, sustainability reporting and decision-making at both farm and organisational levels. Agritemis works with growers, wine organisations, agri-food groups and public institutions to deliver standardised, auditable and scalable environmental indicators, designed for integration into existing data systems and sustainability frameworks.

In order to set up your discounted VitiScore profile email swgb_vitiscore@agritemis.com



The analysis is based on the concept of a plant protection program (PPP). A plant protection program corresponds to the full set of plant protection treatments applied over one complete vine growing cycle. In practical terms, it is the complete spray strategy followed on a parcel during a season.

To conduct the assessment, Agritemis ask members to send them each of your plant protection programs, and the surface (hectares) of the plot managed under this program. For every program, you should provide the list of products applied throughout the growing cycle, specifying:

- The commercial name of each product
- The applied dose (rate per hectare)

Based on this information, Agritemis will calculate, for each treatment, risk indicators relating to Human health (acute toxicity and chronic toxicity) and Environmental impact. They then produce a synthesis at the level of each plant protection program through the calculation of the VitiScore — a score ranging from 0 to 100 that characteriaes the overall health and environmental performance of the program. Finally, they calculate a global VitiScore for the entire holding.

Vitiscore	SWGB Members (>7ha)	SWGB Members (<7ha)	Regular price
Annual Licence	125€	100€	250€
PPP Analysis	200€/PPP	150€/PPP	250€/PPP

Key benefits of using VitiScore:

- National and international sustainability benchmarking tool
- Regulatory Compliance
- Health, water and biodiversity KPIs
- Reduce risks
- Data-driven decision making



4. Non-Chemical protection measures

For each parcel and year, Members will need to upload a record of the non-chemical plant protection measures planned/deployed. For instance, a table like the **SWGB non-chemical protection measures table** could be used

Category	Measure	Planned (yes/no)	Deployed (yes/no)
Hostplant resistance	Growing disease-resistant vine varieties	Varieties grown:	
	Plant resistance elicitors (e.g. Harpin protein)		
Biological control	e.g. Amlor WG, Prestop, Romeo, Serenade, Taegro, Lepinox Plus		
Interference methods	Grape berry moth pheromones		
Cultural methods	Prompt removal of water-shoots (suckers at the base of the vine)		
	No more than 4 buds per metre of trellis at winter pruning		
	No more than 4 shoots per meter of trellis at flowering		
	Canopy no more than 3 leaves thick in the fruit zone post-veraison		
Barriers and traps	Deer fencing		
	Bird netting		
Phytosanitation	Remove infected leaves and bunches by hand		
	Removing vines infected with trunk disease		
Biosecurity	Deploy footwear and small hand tool disinfestation protocols for contract workers		
	Thoroughly steam clean all machinery used in another vineyard		

Feel free to increase the list of methods used.

5. Percentage Fruit Loss

Members are to use the table directly on the Data Hub to record % fruit loss per year due to a) Powdery mildew, (b) Downy mildew, and c) Botrytis bunch rot . These figures are benchmarked KPIs, as they are a good measure of the effectiveness of plant protection programmes, thus assisting Members in evaluating their pest management strategies.

6. Pesticide Applicator Maintenance

For each pesticide applicator, Members must upload a list of dates on which the applicator was calibrated, serviced, and inspected, with the name of the person who carried out the operation. A table like the **SWGB Pesticide Applicator table** may be used:

Operation	Reccomended Frequency	Dates carried out	Person
Checking control unit and pressure gauge	Start of season		
Checking bodywork for rust damage	Start of season		
Cleaning inside and outside	After each application		
Checking filters	After each application		
Checking nozzles for blockages	After each application		
Checking pump	Monthly		
Checking nozzles for output	Monthly		
Checking integrity of boom and boom tube and hoses	Monthly		

Note that The PPP (SU) Regulations 2012 require all pesticide application equipment to be inspected by a qualified inspector at intervals of no more than 3 years. New equipment must be inspected within 5 years of the date of purchase

7&8. Evaluation and Improvement

Here are some suggested objectives for the three-year vine protection improvement plan:

- Increased level of plant and disease monitoring during key periods
- Measures to control excess plant vigour
- Deployment of more cultural techniques for disease suppression (shoot thinning, leaf stripping)
- More precise timing and location of pesticide applications
- Use of alternative pesticides
- Implementation of stricter biosecurity measures

Estate Conservation

This data collection area is designed to assist SWGB Scheme Members in presenting evidence for audit for the following guidelines:

- **Minimum standard:** Map and list wildlife habitats and environmental, landscape, archaeological and historical features in the vineyard.
- **Minimum standard:** Photograph your vineyard's conservation features.
- **Best practice:** List the animals spotted across your vineyard and count the total for each year.
- **Evaluation & planning:** Evaluate the conservation value and biodiversity of the vineyard (and surrounding) environment, then create a long-term plan for both cultivated and non-cultivated land that protects and enhances conservation feature

1. Estate Conservation Map

Every three years, Members are required to upload a map (or maps) of all the parcels included in the field, which can be taken from a source such as Ordnance Survey or Google maps, with the following features clearly marked:

- Boundary of Estate (land owned/leased by Member)
- Boundary of vineyard parcels seeking SWGB Scheme approval
- Boundary of any vineyard parcels not seeking SWGB Scheme approval
- Identification of use of all areas within the Estate, but outside the vineyard parcels, for instance:
 - Rough pasture*
 - Woodland*
 - Garden*
 - Another crop (specify)
- Bodies of water (even if occasionally dry)
 - Ponds & lakes*
 - Rivers*
 - Marshland*
- Buildings (houses, barns, wineries, derelict buildings)*
- Car parks, tracks, roads
- Archaeological sites*
- Historical features* (e.g., barrows)

- Other features of importance, including:
 - Large independent trees*
 - Hedgerows*
 - Dyke or steep bank of earth*
 - Deer fencing*
 - Nest boxes*
 - Rows of windbreak trees*
 - Scrub*
 - Stone or brick walls*
 - Dead wood/log piles*
 - Tussocky grassland/bramble areas*

Vidacycle have agreed to share their [estate conservation mapping protocol](#), which uses Google Maps, with Members. Mapping your estate's habitats is fundamental to understanding its natural assets and provides the baseline for the estate's Conservation and Biodiversity Plan. In association with Environment Systems, WineGB Patron Mapman Ltd provides highly-recommended estate mapping services at a significant discount to SWGB Members.

2,3&4. Estate Conservation Features

Members must upload a complete list of all features identified on the map as having potential conservation importance (those marked with an asterisk *). For each listed feature, include:

- A description of the potential environmental benefits, such as:
 - Provision of food sources for wildlife
 - Habitat creation or shelter for animals
 - Conditions that support the growth of specific or sensitive plant species
- A list of plant and animal species that may benefit from the feature, where applicable.
 - Clearly identify any species of particular conservation concern.

Members must also upload a dated photograph of every conservation-relevant feature listed.

For best practice: Incorporate animals into the analysis by recording the species observed across the vineyard and tracking annual totals.

5. Estate Conservation improvement plan.

Suggested objectives for the three-year estate conservation improvement plan:

- Carry out a survey of plants and animals living in, and around the vineyard
- Engage an environmental consultant (e.g., Vinescapes) to review the potential for developing your estate's natural resources
- Identify and map your estate's natural capital, using the [SENCE \(Spatial Evidence for Natural Capital Evaluation\) tool](#), designed by Environment Systems Ltd and delivered by Mapman Ltd
- Implement Vidacycle's vineyard monitoring app
- Create new habitats in order to increase biodiversity, such as hedges, beetle banks, scrapes, bodies of water, log & stone piles, and bug hotels
- Allow a wide range of native plants on headlands and field margins to flower and seed
- Install at least one nesting box and bat box per parcel
- Establish 'safe highways' or 'wildlife corridors' around your estate for small mammals
- Establish a minimum of 2 x 20m² 'ecological compensatory area' per hectare of vineyard
- Design and establish a biodiversity trail for visitors
- Look after your hedges:
 - Remove non-native species and replace with native species that provide a year-round supply of food for wildlife
 - Keep some areas relatively open, others quite dense
 - Allow the hedges to grow thick; only cut them back every 2 – 3 years, and then alternate the sides, rather than cut both in one operation
 - Encourage flowers and grasses at the hedgerow base and margins
- Plant more native trees on your estate
- Remove non-native invasive species, such as [Japanese knotweed](#), [giant hogweed](#), [Himalayan balsam](#), [Rhododendron ponticum](#) and [New Zealand pigmyweed](#).

Carbon Footprint

This data collection area is designed to assist SWGB Scheme Members in presenting evidence for audit for the following guidelines:

- **Minimum standard:** Use the WineGB Carbon Calculator for annual calculating carbon footprint of your vineyard practices.
- **Evaluation & planning:** Evaluate the carbon footprint per hectare and its contributory factors, then create a plan to reduce these figures and increase carbon sequestration, aiming to become carbon neutral or net zero. If you have already achieved these, create targets to ensure you continually improve as your business needs and the planet change.

1&2. Carbon Footprint Report

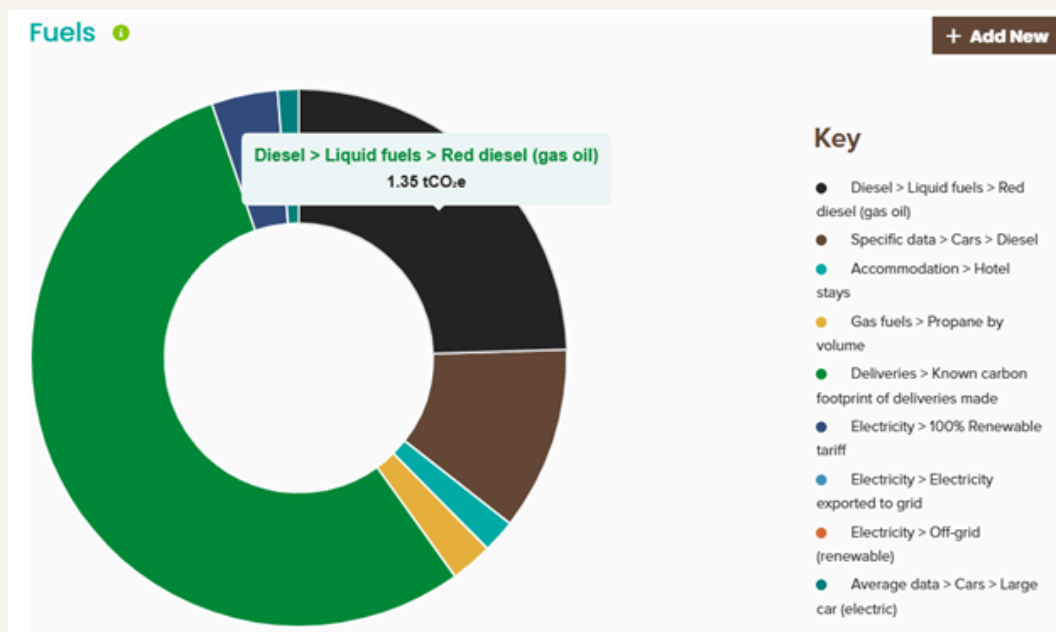
In this section, Members need to upload their vineyard's carbon footprint report, as generated by the WineGB Carbon Calculator, on an annual basis. The WineGB Carbon Calculator is specially designed for our industry and updated annually in response to feedback from our Members. Below is a summary of the steps required, but there is also further advice in the tool and a [webinar available](#) on the WineGB Knowledge Hub to guide you through the process.

How To:

1. **Create an account or login** – Go to the [home page](#) and register for a free account, or Login if you already have one.
2. **Collate your data** – Download and use our the new data collection spreadsheet to help you gather your information into 1 place each year. You only need to complete the parts relevant to your business within the spreadsheet.
3. **Create a report** – In your account, click on 'Dashboard'; this will take you to the place where all your reports are saved. Click 'Add New Report' to create a new report and select a report template which suits your business. Enter some basic details about your business (ensure you use your 4-digit Scheme Number). Ensure you click on either Vineyard or Winery in the list of business types. Click 'Save' and it will take you to the Data Entry page. Return at any time to your dashboard or the report details to change things.
4. **Enter your data** - Work through your footprint using the categories along the top and marking each as complete once finished. You can use your answers in the spreadsheet to help you edit any applicable items within the report, and add your details.

To add extras or explore the system further, click '+ Add New' and a drop down box will help you explore what else is available. Think about tracking and entering information about all activities and purchases during the year leaving anything irrelevant out.

View live results – Your emissions results in tonnes of Carbon Dioxide equivalent (tCO₂e) per year will update in real time as you enter your information as shown below - as an example



Hover over the graph to see detailed information or look below for a table showing the emissions you have entered in each category. Here is where you can copy, edit or delete items on the list - so don't worry about making a mistake.

Type	Quantity	Emissions (t CO ₂ e)	Offset (t CO ₂ e)	Edit	Delete
Liquid fuels > Diesel > Red diesel (gas oil)	397 l	1.35	0.00		
Cars > Specific data > Diesel	1,500 miles	0.61	0.00		
Accommodation > Hotel stays	4 nights	0.11	0.00		
Gas fuels > Propane by volume	60 l	0.14	0.00		
Deliveries > Known carbon footprint of deliveries made	3,000 kgCO ₂ e	3.00	0.00		
Electricity > 100% Renewable tariff	1,000 kWh	0.22	0.00		
Electricity > Electricity exported to grid	50 kWh	0.00	-0.01		
Electricity > Off-grid (renewable)	300 kWh	0.00	0.00		
Deliveries > Known carbon footprint of deliveries made	10 kgCO ₂ e	0.01	0.00		
Cars > Average data > Large car (electric)	elec car 500 miles	0.07	0.00		
Total:		5.51	-0.01		

View full report – Once you have added your information click 'View Report'. Note that you can toggle back and forth between Report and Data Entry at any time.

The report gives you three levels of detail, Summary, Detailed Summary and Full Results. These offer you varying levels of detail and analysis of the carbon footprint of your business.

Your PDF should be downloaded and is requested for SWGB certification. Keep it on file for future reference - it's your hard work!

3&4. Carbon Footprint Report

The Carbon Calculator will enable Members to see the carbon hotspots on their vineyards. Whilst cutting emissions from all parts of your business is important, don't shy away from tackling the big ones. Carbon sequestration offers huge potential to 'offset' emissions (for vineyards), and is going to be a clear policy direction for farming subsidies in coming years. However genuine carbon offsets also exist when exporting electricity from renewable energy (e.g., solar panels) and when recycling materials.

Your carbon report is also a useful tool for general reporting going forward, with more trade tenders and government schemes requiring this information.

Here are some suggestions for three-year plans to reduce vineyard carbon footprints:

- Plant hedges and trees around the vineyard
- Increase the level of organic matter in vineyard soils, by adding organic matter and allowing plants to grow taller prior to mowing
- Use less diesel by carrying out several operations in one pass or reducing the number of sprays
- Convert from fossil fuels to other sources of energy, e.g., solar energy, or electricity from renewable sources
- Reduce the use of synthetic nitrogen-based fertilisers, replacing with organic fertilisers, such as manure



Vineyard Waste

This data collection area is designed to assist SWGB Scheme Members in presenting evidence for audit for the following guidelines:

- **Best practice:** Work out what % of your waste you are reusing, recycling and sending to landfill.
- **Evaluation & planning:** Evaluate the amount and type of waste generated by vinegrowing activities, then create a plan to reduce, re-use or recycle this waste.

A lot of the information we would require you to gather for this section is covered in the carbon footprinting section, so please just use this area to evaluate your Vineyard Waste and ensure all other data is captured in your carbon footprint report.

Examples of vineyard waste:

- Batteries
- Scrap metal:
 - Posts & tutors
 - Wire
- Oil
- Tyres
- Electrical items
- Wood
- Glass
- Pesticide containers
- Vine/tree tubes
- Plastics:
 - HDPE
 - LDPE
 - PET
 - PP
 - PVC
- Organic wastes
 - Food and drink
 - Green
- Paper
- Cardboard
- Clothing
- Paint

1. Recycling Rates

Record your recycling rates year on year. Splitting your waste into what you reuse, recycle, and send to landfill

2&3. Vineyard Waste Evaluation and Targets

Here are some suggestions for waste reduction and recycling objectives for the three-year improvement plan:

- Take batteries and electrical items to recycling sites
- Take scrap metal to a specialist metal scrap yard
- Take engine oil to a recycling bank
- Use scrap wood to create habitats for insects and small mammals
- Have pesticide containers collected by a specialist company
- Use only biodegradable vine/tree tubes
- Compost any organic wastes, or convert them to biochar.
- Recycle all paper and cardboard

Further Reading

Soil Health

- [Why soil is one of the most amazing things on Earth | Video](#)
- [Learn about soil | UKsoils](#)
- [Green manures improve soils in orchards | Article](#)
- [Will biochar be the next big thing in vineyards? | Article](#)
- [Feed your vines on insects!](#)
- [Nitrogen nutrition in grapevines | Article](#)
- [Climate change effect of nitrous oxide much more significant than first estimated | Research](#)
- [Biochar helps root development. | Article](#)
- [Microbial communities in vineyards. | Article](#)
- [OneSoil | Digital Solution](#)
- [Sustainable Soils Alliance | Blogs](#)
- [Advice for farmers about soil health | The Soil Association](#)
- [Soil Health - Essential Information | NFU](#)

Vineyard Floor Management

- [Vineyard floor management strategies](#)
- [Environment-friendly vineyard floor management using bermudagrass and an autonomous mower](#)
- [Growing clover under the vine rows | Article](#)
- [Grow hemp in vineyards and make better wines](#)
- [Flame weeding .](#)
- [Mycorrhiza and grapevines.](#)
- [Earthworms prefer permanent cover crops.](#)
- [Wild bees enjoy floral diversity.](#)
- [Cover crops in vineyards.](#)
- [Complete floor cover and autonomous mowing.](#)
- [Autonomous mowing and complete floor cover](#)
- [Sheep grazing in vineyards](#)
- [Non-chemical weed control](#)
- [Switch from glyphosate](#)
- [Under-row weed control](#)

Canopy and Yield Management

- [3DBunch app enables you to count berries/bunch](#)
- [Intro to frost protection in vineyards.](#)
- [Protect your vineyard from frost with fog. | Video](#)
- [Understanding Frost](#)
- [Using candy floss to protect vines against frost](#)
- [Delaying budbreak for frost protection.](#)
- [Grape maturity maps.](#)
- [Use of GPS in viticulture.](#)
- [Precision viticulture.](#)
- [Yield prediction](#)
- [Canopy and yield management information](#)
- [Practical advice from Vinescapes](#)
- [Optimise vine canopies for yield and quality | Hutchinsons](#)

Vineyard Protection

- [Biosecurity in vineyards | Vinehealth Australia](#)
- [Farm-gate hygiene activities. | Fact Sheet](#)
- [Monitoring moths with computers.](#)
- [Predict the risk of Botrytis with NDVI](#)
- [Protect your vines from the rain. | Video](#)
- [Robots armed with UV light fight mildew | Video](#)
- [A spoonful of sugar with your copper?](#)
- [Synthetic peptides prevent the development of Downy mildew](#)
- [Investigation into effect of plant protection products on berry composition and microbial ecology](#)
- [Spraying clay to protect from spotted-winged drosophila](#)
- [Use of elicitors in vineyards.](#)
- [Cane extracts work as fungicides.](#)
- [Treat your vines with chitosan.](#)
- [Or maybe seaweed?](#)
- [Precise monitoring for grape diseases.](#)
- [Fungicides for powdery mildew.](#)
- [Cinnamon extract might control downy mildew](#)
- [Pesticide Resistance](#)

Estate Conservation

- [Ecosystems and terroir](#)
- [Vineyards grow better with wild plants](#)
- [The top ten animals in vineyards](#)
- [Bats eat moths](#)
- [Bird boxes in vineyards](#)
- [Raising chickens in your vineyard](#)
- [Raimat to open Spain's largest vineyard nature reserve](#)
- [Plant trees to be more sustainable.](#)
- [Ecosystem services.](#)
- [Growing grapes to conserve biodiversity.](#)
- [Grapevine trunks](#)
- [Biodiversity in the vineyard](#)
- [Nature Recovery Strategy.](#)

Carbon Footprint

- [Alpo electric tractors.](#)
- [Replacing broken vineyard posts | Vinpost](#)
- [Agrivoltaism: growing vines under solar panels](#)
- [Monarch electric tractors.](#)
- [Terraview](#)
- [Carbon Negative Vineyards](#)
- [Vineyard sustainability: to measure is to manage](#)
- [Sustainable land use](#)
- [Vineyard Management Practices to Reduce your Carbon Footprint](#)
- [Case Study: Reducing Emissions and Insetting Carbon in Vineyards](#)
- [Building Climate Resilience in Vineyards: Carbon Sequestration](#)
- [Regenerative Viticulture - Impacting carbon](#)

Vineyard Waste

- [Unripe Grapes: extraction methods of a promising waste of viticulture](#)
- [Extracting Value and Health Benefits from Grape Waste](#)
- [Prunings for mulch](#)

Additional Resources

IWCA – International Wineries for Climate Action

IWCA focuses specifically on climate mitigation and science-based emissions reductions. Ways it can help:

- Carbon footprint measurement support, using standardised methodologies aligned with the GHG Protocol.
- Guidance on reducing Scope 1, 2 and 3 emissions, including energy efficiency, renewable energy adoption, and low-carbon packaging.
- Peer benchmarking, since all members report emissions annually and follow the same framework.
- Access to climate-focused best practices, case studies, and technical working groups.
- External credibility, as IWCA membership signals a verified commitment to climate action.

The Porto Protocol

The Porto Protocol is a global sustainability platform centred on knowledge-sharing and collaboration. Ways it can help:

- Access a large library of case studies, tools, and webinars on water, soil, biodiversity, energy, and climate resilience.
- Connect with other producers to exchange practical solutions.
- Join working groups on topics like regenerative viticulture, packaging, and circularity.
- Showcase their own sustainability projects, contributing to global learning.
- Stay updated on innovation, as the platform regularly features new technologies and approaches.

RVF – Regenerative Viticulture Foundation

RVF promotes regenerative agriculture as a pathway to climate resilience and ecosystem restoration. Ways it can help:

- Guidance on regenerative practices, including cover cropping, composting, reduced tillage, and soil-health monitoring.
- Training and educational resources on soil biology, carbon sequestration, and biodiversity enhancement.
- A framework for transitioning away from chemical dependency, focusing on long-term ecosystem function.
- Community support, connecting growers committed to regenerative principles.
- Access to scientific research on soil carbon and regenerative outcomes.

Other Support

Ricardo - The Auditor

The Auditor can't provide direct support but can answer specific questions about what types of evidence meet the scheme standards and clarify expectations via the scheme manager. The Auditor will offer constructive guidance after the audit and highlight any missing information during the audit.

Scheme Manager

The scheme manager supports members throughout the entire audit journey, from initial data collection and preparation through to final audit submission. They liaise directly with the Auditor to clarify requirements or resolve queries, ensuring members receive consistent and accurate guidance. Members can also use the comments sections on the Data Hub to highlight key points or provide context, which the scheme manager helps communicate and manage throughout the process.

SWGB Peers

Scheme peers can support members by sharing examples of what worked well in their own audits, offering informal advice, and helping interpret requirements in practical, real-world terms. Their lived experience makes the process feel more approachable and less daunting.

Sustainability Council and Working Groups

The council and working groups provide support based on their experience with creating and going through the scheme themselves. They help shape minimum standards and best practice for the scheme.

Sustainability Ambassador

The Sustainability Ambassador support members by offering encouragement, sharing best-practice examples, and helping them feel connected to the wider scheme community. They act as approachable points of contact who can guide members toward useful resources and motivate them throughout the audit process. They provide technical support to the scheme ensuring that the standards are relevant to industry and national expectations and needs.

This document is for guidance only: the Auditor reserves the right to use their discretion, on a case-by-case basis, when assessing the evidence that you submit.



Acknowledgements

Our sincere thanks go to everyone who has contributed to the creation, evolution, and refinement of these vineyard sustainability guidelines. These guidelines reflect the collective expertise, commitment, and collaboration of everyone involved.

Gratitude is owed to Chris Foss, Beth Kelly, the original development team, and Laura Tattum, whose first iteration of these guidelines established the foundation on which much of the current framework is still built.

We are grateful to the Sustainability Council for their oversight of the scheme, their thoughtful review of these updates, and their invaluable support in strengthening and clarifying the guidance.

Our appreciation also goes to Anne Jones for her expert consultation during the development of the new guidelines, helping to shape their direction and improve their clarity.

Finally, a special thank you to Emma Rix for her leadership in managing the scheme, coordinating the implementation of changes, and bringing together this updated version of the guidelines with care and precision.

This document is for guidance only: the Auditor reserves the right to use their discretion, on a case-by-case basis, when assessing the evidence that you submit.

WINE  GB



Any Questions? Contact the Scheme Manager:
swgb@winegb.co.uk